

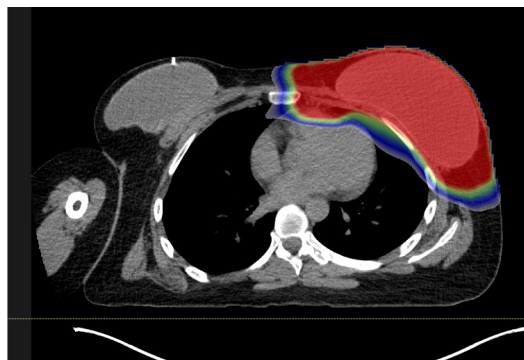
Proton Therapy for Breast Cancer

Breast cancer is the second deadliest cancer among women in the United States, but treatments like proton therapy can make a difference. Proton therapy is a specialized type of radiation therapy that is often used to treat cancers near delicate or critical parts of the body. As the breasts sit very close to the heart and lungs, proton therapy helps home in on targeted cells while minimizing exposure to the surrounding healthy organs, lowering the risk for potential side effects.

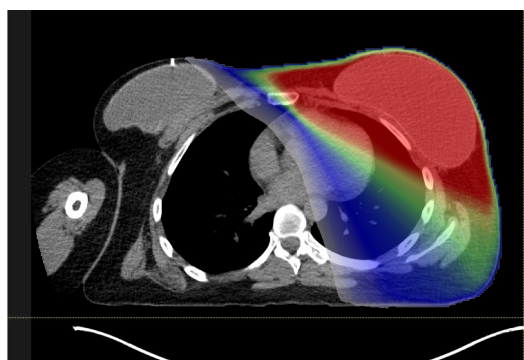
How Proton Therapy Works

During treatment, a narrow proton beam is guided to focus the highest energy of the beam at the location of the tumor in the breast. While the proton beam is being delivered, it can also:

- Be designed to conform to the shape, size and depth of tumors
- Limit excess radiation near surrounding areas of the body



Proton Therapy



Conventional X-Ray Therapy

Red: High Radiation Dose
Green: Intermediate Radiation Dose
Blue: Low Radiation Dose

Precise Radiation Targeting

Once the proton beam enters the body at the targeted breast tumor, less radiation is administered. Then, after the proton beam hits the tumor, little to no radiation is delivered to help protect nearby tissue.

Proton Therapy Candidates

Proton therapy may be a good option for patients with:

- Stage I, II or III breast cancer
- Breast cancer that has spread locally
- Breast cancer in the lymph nodes
- Patients with all types of molecular markers

More Benefits of Proton Therapy

- Non-invasive and may reduce side effects
- May reduce recurrence rates
- May have less effect on quality of life during and after treatment
- May treat areas near previously irradiated tissues
- Less radiation to the heart and lungs

Refer a Patient Today

To refer a patient to Texas Center for Proton Therapy, fax the applicable referral form and the patient's medical records to the patient intake team at 469-420-9619 or visit www.texascenterforprotontherapy.com and click the "Request an Appointment" button in the upper right-hand corner of the home page. If you need further assistance or have questions, please call Texas Center for Proton Therapy at 469-513-5500.



TEXAS CENTER
for **PROTON THERAPY**

Targeting Cancer, Precisely